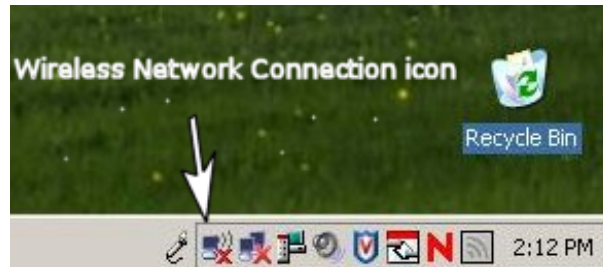


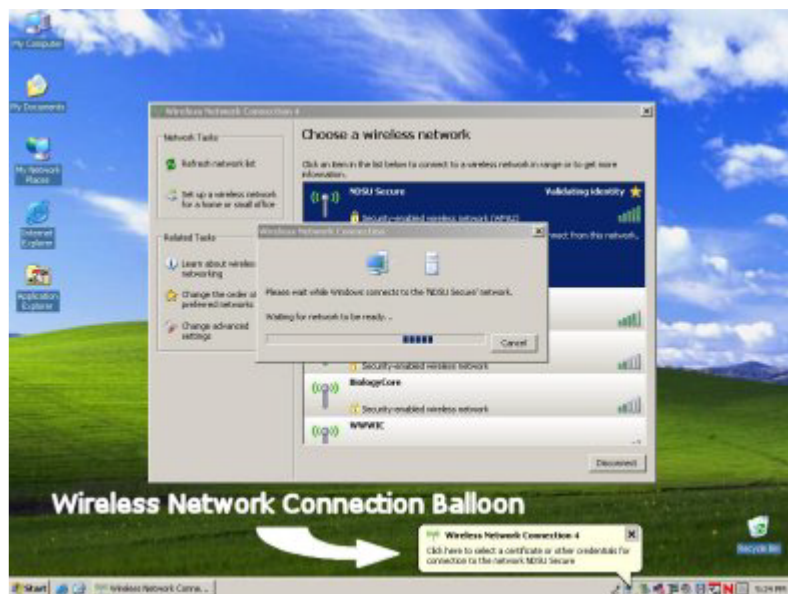
SecureW2 will allow you to connect to the **NDSU Secure** wireless network. SecureW2 provides a more secure way to access the NDSU wireless network.

Connection Instructions

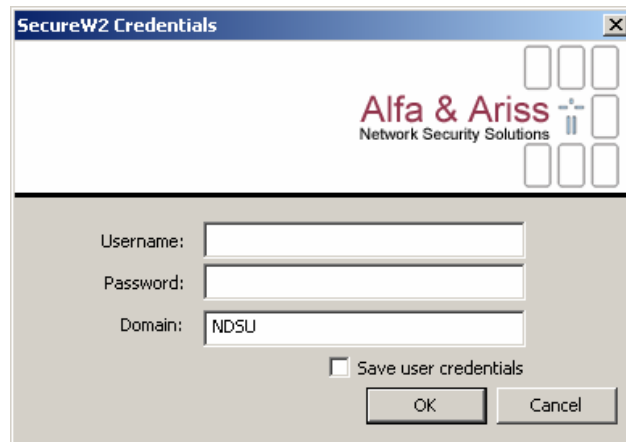
1. To connect to the NDSU secure wireless network, click the **Wireless Network Connection** icon on the bottom right of the screen. If the computer is within range of the wireless network, **NDSU Secure** will be listed. Select **NDSU Secure** and click connect.



2. Click the pop-up bubble in the bottom right of the screen to access the login prompt.



3. Enter your **IID and Password** and click ok. You are now connected to the **NDSU Secure** wireless network.



Common errors:

1. The login window does not appear.
 - Make sure the Microsoft Wi-Fi protected Access 2 (KB893357) update is installed. Visit http://www.ndsu.edu/its/internet/wireless/wireless_security/wpa2/ for instructions.
2. The login window keeps prompting for a username and password.
 - Be sure the username and password are correct. Contact the Help Desk at 231-8685 for username and password problems.
 - The WLAN service is required to log in. To request WLAN service, visit <http://enroll.nodak.edu>.